

RUBBER SHEETS CATALOGUE

Rubber Sheets & Insulating Mats

GENERAL PURPOSE RUBBER SHEET

SRAAIN General Grade Rubber Sheet is used in applications that require no or very slight resistance to properties. This is the most common type of rubber sheeting and has the lowest price.

APPLICATION

Packing Material, Gaskets, Floor Covering, General Insulation, and Protection Pads in all construction, Industrial & General applications.



Polymer	Spec Gravity (g/cc)	Hardness (Shore A)	Tensile Strength Min (MPa)	Elongation MIN.(%)	Color	Temp. Range (°C)
NBR/SBR	1.65	70+-5	2.0	150	Black	0 to +60

Surface Finish-Smooth Finish on Both Sides.

NATURAL / SBR RUBBER SHEET

SRAAIN Natural Rubber Sheet is an excellent general-purpose rubber which makes it suitable for almost all general as well as most dynamic applications.

APPLICATION

Used as Gaskets, Seals, Shock mounts, Tank lining, Pipelining, Surface protection, Skirt-board sheets, Bearing pads, Shot blasting sheets, High tensile applications, and all Industrial and Commercial use.

PROPERTIES

- Outstanding resistance to cut, tears & abrasion.
- Excellent mechanical properties & low compression set.
- Excellent dynamic and rebound properties.
- Resistance to many acids, alkalis, and salts.
- When compounded especially NR also has excellent electrical properties.



Polymer	Spec Gravity (g/cc)	Hardness (Shore A)	Tensile Strength Min (MPa)	Elongation MIN.(%)	Color	Temp. Range (°C)
NBR/SBR	1.60	70+-5	3.0	250	Black	-20 to +70
NBR/SBR	1.51	65+-5	5.0	275	Black	-20 to +70
NBR/SBR	1.40	60+-5	6.0	300	Black	-20 to +70
NBR/SBR	1.30	55+-5	8.0	350	Black	-20 to +70
NBR/SBR	1.20	70+-5	14.0	350	Black	-20 to +70

Surface Finish-Smooth Finish on Both Sides.
Specifications are subject to change without prior notice.

ABRASION RESISTANCE RUBBER SHEET

SRAAIN Abrasion Resistance sheets are premium NR grade sheets for high abrasion.

APPLICATION

Used as Lining for Tanks, Pipes, Chutes, Concrete Tumblers, Cyclones, and Shot Blasting Rooms or for any other surface protection mostly in Mining & Cement Industries, Material Handling units, and other Industrial applications.

PROPERTIES

- Outstanding resistance to cut, tears & abrasion.
- More suitable for high impact and wear application.



Polymer	Spec Gravity (g/cc)	Hardness (Shore A)	Tensile Strength Min (MPa)	Elongation MIN.(%)	Color	Temp. Range (°C)	Max Abrasion (mm)
NR	1.05	40+-5	19.0	700	Beige	-30 to +70	90
NR	1.30	40+-5	12.0	650	Beige	-30 to +70	120
NR	1.02	40+-5	25.0	780	Red	-30 to +70	90
NR	1.30	40+-5	15.0	625	Red	-30 to +70	110
NR	1.10	40+-5	15.0	500	Black	-30 to +70	100
NR	1.32	40+-5	12.0	480	Black	-30 to +70	120

Surface Finish- Smooth or Fabric/Fabric or Smooth/ Fabric

NITRILE RUBBER SHEET

SRAAIN Nitrile Rubber Sheets are designed to provide extraordinary fuel & oil resistance with physical properties for longer service periods in demanding applications. We also provide NBR rubber sheets in accordance with the BS 2751 standard requirement.

APPLICATION

Used as Lining for Tanks, Pipe Lining & Oil Resistance Covering, Pads, Gaskets, and Seals mostly in Electrical Transformers, Oil Refineries/ Drilling Rigs, and Ink/Paint Industries.

PROPERTIES

- Excellent Oil & Gas resistance.
- Good mechanical properties.
- Moderate aging properties.



Polymer	Spec Gravity (g/cc)	Hardness (Shore A)	Tensile Strength Min (MPa)	Elongation MIN.(%)	Color	Temp. Range (°C)
NBR	1.51	65+-5	8.0	375	Black	-30 to +70
NBR	1.27	65+-5	11.0	350	Black	-30 to +70
NBR	1.30	60+-5	14.0	350	Black	-30 to +70

Surface Finish – Smooth Finish on Both Sides.
Specifications are subject to changes without prior notice.

EPDM RUBBER SHEET

SRAAIN EPDM Sheets provide outstanding resistance to oxidants, ozone, heat and and harsh weathering making them ideal for general outdoor use and atmosphere exposure applications.

APPLICATION

Gaskets, Seals, Tank Lining, Pipe Lining, Weather Strips, For Covering in Chemical Industry, Steam, and Outdoor application.

PROPERTIES

- Exhibit good resistance to many acids, Chemicals, and solvent-inclusive corrosive chemicals.
- Great for outdoor applications.



Polymer	Spec Gravity (g/cc)	Hardness (Shore A)	Tensile Strength Min (MPa)	Elongation MIN.(%)	Color	Temp. Range (°C)
EPDM	1.25	60+-5	9.0	300	Black	-30 to +130
EPDM	1.15	65+-5	10.0	325	Black	-30 to +130
EPDM	1.40	65+-5	6.0	250	Black	-30 to +130

Surface Finish – Smooth Finish on Both Sides.
Specifications are subject to changes without prior notice.

EPDM WATERPROOFING MEMBRANE

SRAAIN EPDM waterproofing membrane is a single Ply EPDM roofing solution that offers a reliable and long-lasting solution for your waterproofing needs.

APPLICATION

Roof Membranes, Basement Foundation, Pond and Water Reservoir Liner, etc.



Polymer	Spec Gravity (g/cc)	Hardness (Shore A)	Tensile Strength Min (MPa)	Elongation MIN.(%)	Color	Temp. Range (°C)
EPDM	1.20	62+-5	9.0	350	Black	-30 to +130
EPDM	1.40	62+-5	6.0	300	Black	-30 to +90

Surface Finish – Smooth Finish on Both Sides.
Specifications are subject to changes without prior notice.

NEOPRENE (CHLOROPRENE) RUBBER SHEET

SRAAIN Neoprene Sheet is a highly resistant material & is used for a variety of Outdoor Marine applications. Excellent resistance to weather & ozone with suitability to greases, inorganic salts, acid, water, and many other chemicals makes it an ideal solution for outdoor use.

APPLICATION

Well suited for demanding applications such as Gaskets, Seals, Pipe covering, Bearing pads, Strips, Hoses, Corrosion Resistant Coatings in construction sites, and Marine & Industrial Applications. Also used as a sound Isolation Pad in Sound Studios, Power Transformers & Industries.

PROPERTIES

- Maintain flexibility at high temperatures.
- Good resilience against heat ozone & weather.
- Fire retardant grade available.
- Better degradation than other rubbers.



Polymer	Spec Gravity (g/cc)	Hardness (Shore A)	Tensile Strength Min (MPa)	Elongation MIN.(%)	Color	Temp. Range (°C)
CR	1.55	75+-5	8.0	300	Black	-20 to +130
CR	1.45	65+-5	10.0	350	Black	-20 to +130

Surface Finish – Smooth Finish on Both Sides.

SILICONE RUBBER SHEET

SRAAIN Silicon Rubber sheet stays constant at high temperature and maintains flexibility even at low temperature. It has excellent outstanding resistance to oxidation, ozone and weathering.

APPLICATION

Electrical, household, automotive, medical, food and pharma, toys, and kitchenware. This is a largely used polymer in multiple industries. Gasket, Seals, Pressure Pads, Vacuum and Pressure Bagging, etc.

PROPERTIES

- Food & Pharma grade.
- Low inflammability & low smoke toxicity.
- Good insulation material.



Polymer	Spec Gravity (g/cc)	Hardness (Shore A)	Tensile Strength Min (MPa)	Elongation MIN.(%)	Color	Temp. Range (°C)
SL	1.25	60+-5	6.5	350	Red/Translucent	-50 to +200
SL	1.15	50+-5	5.0	350	Red/Translucent	-50 to +180

Surface Finish – Smooth Finish on Both Sides.
Specifications are subject to changes without prior notice.

BUTYL RUBBER SHEET

SRAAIN Butyl Rubber Sheets are impermeable to air and used in various applications requiring airtight rubber and offer outstanding resistance to gases, heat aging, oxygen, vapors, ozone, sunlight, abrasion, and tearing. It has excellent resistance to acids and alkalis which makes it an essential product in Chemical & Fertilizer Plants.

APPLICATION

Gaskets, Seals, Tank Lining, Pipe Lining, and various other sealing applications.

PROPERTIES

- Excellent aging stability.
- High Impermeability to gases.
- High resistance to heat.
- High hysteresis for energy absorption.
- Slow vulcanization reactions (Low level of unsaturations).



Polymer	Spec Gravity (g/cc)	Hardness (Shore A)	Tensile Strength Min (MPa)	Elongation MIN.(%)	Color	Temp. Range (°C)
IIR	1.20	60	8.0	375	Black	-30 to +130
IIR	1.30	65	7.0	300	Black	-30 to +130

Surface Finish – Smooth Finish on Both Sides.

HYPALON RUBBER SHEETS

SRAAIN Hypalon Rubber Sheet has outstanding resistance to oxidation, ozone, and weathering. It is not suitable for fuel contact applications.

APPLICATION

Gasket Seals, Tank Lining, Pipe Lining, and various other sealing applications. Used in construction, Chemical, Automobile, and Electrical industries for its impermeability properties.

PROPERTIES

- Excellent Electrical Properties
- Resistance to fire and self-extinguishing in nature.
- Resistant to most inorganic chemicals, acids, oil, and greases at even high temperatures.



Polymer	Spec Gravity (g/cc)	Hardness (Shore A)	Tensile Strength Min (MPa)	Elongation MIN.(%)	Color	Temp. Range (°C)
CSM	1.35	60	90	350	Black	-30 to +130
CSM	1.45	70	80	300	Black	-30 to +110

Surface Finish – Smooth Finish on Both Sides.

FOOD GRADE RUBBER SHEET

SRAAIN Food Grade Sheets are designed for edible industry application that requires non-toxic, tasteless, and smell-free solutions. SRAAIN offers food-grade sheeting in different polymers depending on the application requirements.

White NR: For wet and dry organic acids and alcohol.

White NBR: Commonly used with food and drink stuff containing oils, fats & greases.

White EPDM: For high temp. & outdoor food industry requirements.

White CR: For high abrasion applications with resistance to fats & oils.



APPLICATION

Gaskets, Seals, Covering, Tank Linings, and Pipe Linings mostly in the food and pharmaceutical industry.

Polymer	Spec Gravity (g/cc)	Hardness (Shore A)	Tensile Strength Min (MPa)	Elongation MIN.(%)	Color	Temp. Range (°C)
NR	1.45	60+-5	6.0	300	White	-20 to +70
NBR	1.40	65+-5	6.0	300	White	-25 to +110
EPDM	1.35	60+-5	6.5	300	White	-30 to +130
CR	1.50	65+-5	6.5	300	White	-25 to +120

Surface Finish – Smooth Finish on Both Sides.

NATURAL SPONGE RUBBER SHEET

SRAAIN Sponge Sheets are compounded of Natural Rubber used in general sealing applications with limited cycles of compression.

APPLICATION

Gasket, Seals, Sound, and Vibration Isolation Packing.



Polymer	Spec Gravity (g/cc)	Hardness (Shore A)	Tensile Strength Min (MPa)	Elongation MIN.(%)	Color	Temp. Range (°C)
NR	0.80	25+-5	1.5	225	Black	-20 to +70

Surface Finish – Smooth Finish on Both Sides.

INSERTION RUBBER SHEET

**Rubber Insertion Jointing for air and water pressure IS-638 ISI Marked.
(Conforming to IS-638/1979 : CM/L – 8361375)**

SRAAIN Insertion Jointing is manufactured using Natural and SBR rubber as per IS:638 Standard.

APPLICATION

Used between flanges and joints subjected to water, steam & air pressure in Railways, PHED, and other State and Central Government utilities.



Polymer	Spec Gravity (g/cc)	Hardness (Shore A)	Tensile Strength Min (MPa)	Elongation MIN.(%)	Color	Temp. Range (°C)
NR	-	50 to 60	8.5	400	Black/White	-
NR	-	66 to 80	8.5	300	Black/White	-

Surface Finish – Smooth Finish on Both Sides.

COATED FABRICS/INSERTION SHEETS

SRAAIN Insertion Sheeting is produced in different combinations of fabric and polymers to suit different applications. The Fabric In-Lay helps prevent stretching and boost the tear strength without insertion grades.

APPLICATION

Gaskets, Sealing, Diaphragm, and other applications needed higher physical strength rubber.



Polymer	Spec Gravity (g/cc)	Layers	Fabric	Hardness (Shore A)	Tensile Strength Min (MPa)	Elongation MIN.(%)	Color	Temp. Range (°C)
NBR	1.51	1 Ply	Nylon 66	65+-5	8.0	375	Black	-30 to +110
NBR	1.27	1 Ply	Nylon 66	65+-5	11.0	350	Black	-30 to +110
NR	1.60	1 Ply	Cotton	70+-5	3.0	250	Black	-20 to +70
NR	1.60	1 Ply	Polyester Cotton	70+-5	3.0	250	Black	-20 to +70
NR	1.20	1 Ply	Nylon 66	70+-5	14.0	350	Black	-20 to +70

*Customized Polymer Fabrics & number of layers can be offered against requirements.

SKIRTBOARD AND CHUTING LINING

SRAAIN Skirtboard rubber is compounded using SBR/NR to minimize wear on surfaces impacted by solid Abrasive material & Slurries.

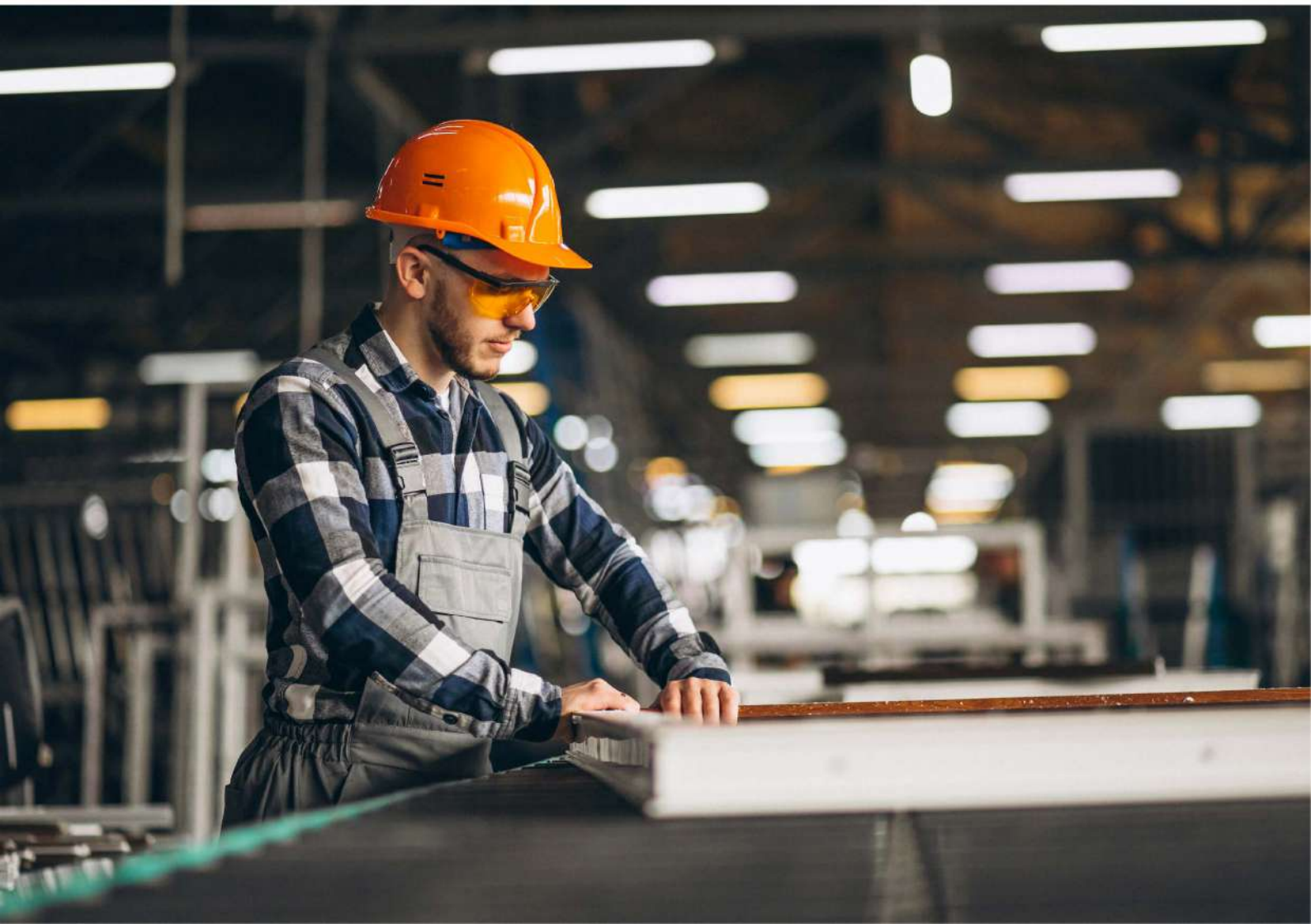
APPLICATION

Chutes, Skitboard, Concrete Tumblers, or any other surfaces.



Polymer	Spec Gravity (g/cc)	Hardness (Shore A)	Tensile Strength Min (MPa)	Elongation MIN.(%)	Color	Temp. Range (°C)
NR/SBR	1.2	66	100	300	Black	-30 to +70

Surface Finish – Smooth Finish on Both Sides.





ELECTRICAL INSULATING MATS (IS 15652:2006)

High Voltage Electrical Insulating Mat is considered Personal protection equipment (PPE), specially designed for use in front of open switchboards or high voltage equipment. These Insulating Mats are manufactured using elastomer (latex, rubber, and elastomeric compounds that might be natural, synthetic, or a mixture of both) all along with anti-skid aberrations on the top to avoid slippage and smooth, lower surface. Our High Voltage Mats are manufactured as per the latest Indian Standards and have been successfully tested and approved by DGS&D, ERDA, CPRI, NTH, and other NABL-accredited labs.

APPLICATION

Mats are used near for the safety of workmen from electrical shock. Installation in all kinds of sub-stations operating HT, LT switchgear, control panels, transformer rooms, battery rooms, generator rooms, bus bar panels, etc.

FEATURES

- **ISI Marked, ERDA & CRPL** Type Tested insulating mats.
- Test and Specifications also meet **BS 921, IEC 61111, and ASTM.**
- For both A.C. and D.C. applications.
- Di-electrical Strength 65KV (650000volts)
- AC-proof Voltage up to 36 kV
- Low-Temperature resistant.
- Acid, Alkali, Diesel & Transformer oil resistant.
- Flame Retardant.
- Good Aging properties
- High Insulation resistance exceeding 1100000 MΩ.
- High tensile strength and elongation properties.
- Leakage Current less than 1mA



High Voltage
Current Safety



Electric Panel
Floor Safety



For Pain in the
Legs Safety



Safety Mat





ELECTRICAL INSULATING MATS (IS 15652:2006)

Dimensions

Forms	Rolls or Mat
Length	5M/10M/20M
Width	3ft(900mm)/1M
Color(*Other colors as per request)	Red/Black/Blue/Grey
Thickness	2mm, 2.5mm, 3mm

*We can supply the electrical Insulating mats in any length and width as per customer requirement

TECHNICAL SPECIFICATIONS

Class	Thickness	Working Voltage	AC Proof Voltage	Di-Electric Strength (Withstand voltage)	Approx Weight (per Sq Mtr)
A	2.0 mm	3.3 KV	10.0 KV	30.0 KV	3.2 Kgs
B	2.5 mm	11 KV	22.0 KV	45.0 KV	4.0 Kgs
C	3.0 mm	33 KV	36.0 KV	65.0 KV	4.8 Kgs

NOTE

1. Mats shall be ISI Marked at every meter with a unique CM/L No.
2. Mats shall be Type Tested by ERDA.
3. Mats shall be pastable type. Pasting / Fixing or request.
4. Inspection facilities are available.
5. In-house test certificate along with supply.
6. Mats shall be replaced on the first sign of any damage.



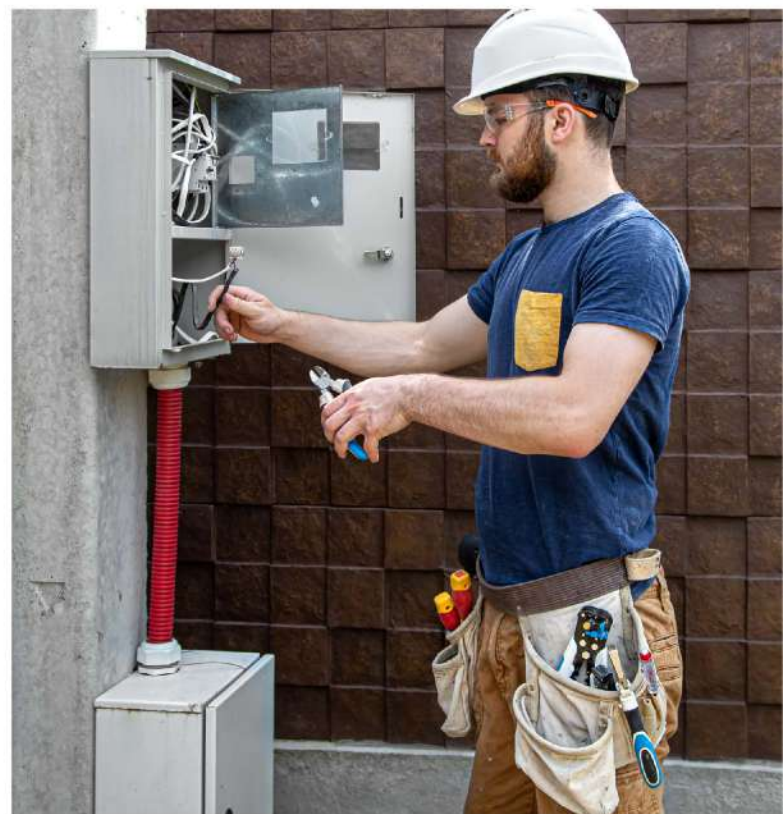


ELECTRICAL CHECKERED MATS (IS 5424:1969)

SRAAIN Electrical Checkered mats are premium brands for Electrical Insulating Rubber Mats according to the IS 5424:1969 Standard. Electrical Rubber Mats are highly recommended for the safety of workmen against any electrical hazard or immensely economical & suitable for general usage too. The material that's utilized in our insulating rubber mattings is made of natural rubber that has good mechanical properties and electrical resistance. They are available in a standard size of 1m x 2m with a Fluted or Checkered design. conventional Rubber Mats (IS 5424:1969)

APPLICATION

Generally, it is used as a floor covering around electrical panels as a precaution against possible current leaks and short circuits. The use of rubber mats is common in the power generation industry, as well as in substations, workshops, etc.



TECHNICAL SPECIFICATIONS

Thickness	Working Voltage	AC Proof Voltage	Di-Electric Strength (Withstand voltage)	Approx Weight (per Sq Mtr)
6.0 mm(1/4")	0.4 KV	15.0 KV	40.0 KV	10.0 Kgs
8.0 mm(5/16")	1.0 KV	15.0 KV	40.0 KV	13.0 Kgs
10.0 mm(3/8")	7.5 KV	15.0 KV	40.0 KV	17.0 Kgs
12.0 mm(1/2")	11.0 KV	15.0 KV	40.0 KV	20.0 Kgs
16.0 mm(5/8")	17.0 KV	15.0 KV	40.0 KV	27.0 Kgs
19.0 mm(3/4")	22.0 KV	15.0 KV	40.0 KV	32.0 Kgs
25.0 mm(1")	33.0 KV	15.0 KV	40.0 KV	42.0 Kgs



 Borivali West, Mumbai, Maharashtra, India.

 +91 85916 28435 | 85911 96024

 info@sraain.com | mdoffice@sarthakrubberandagroindustries.com

